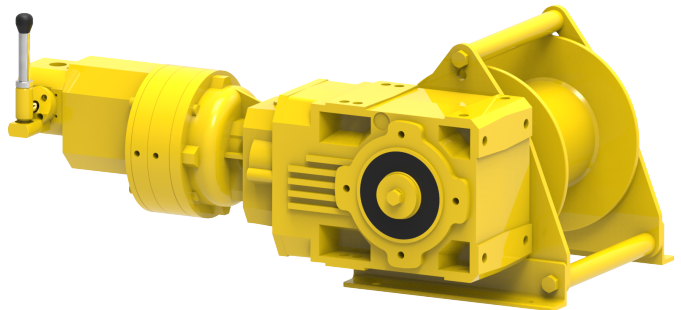


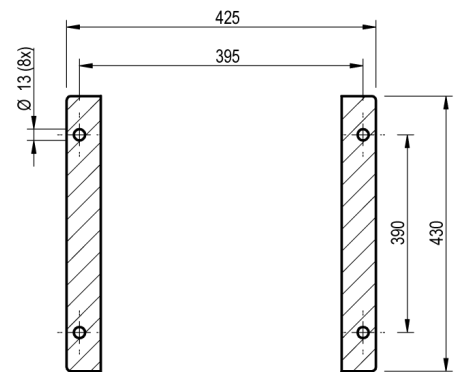
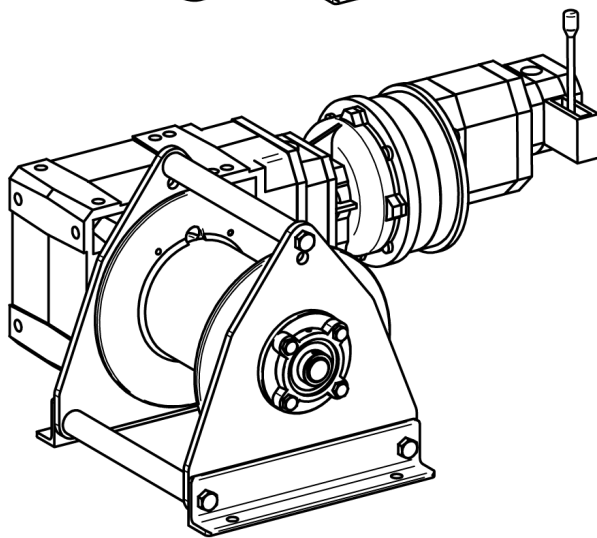
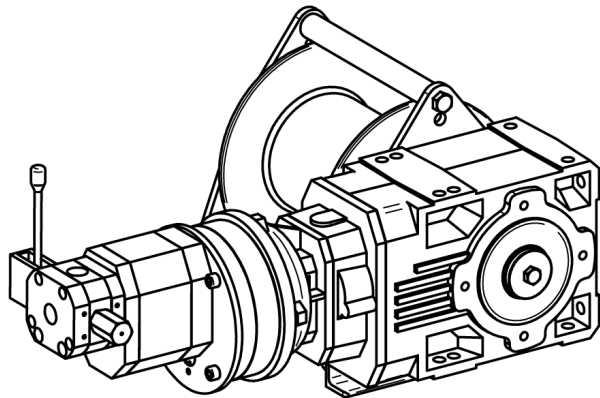
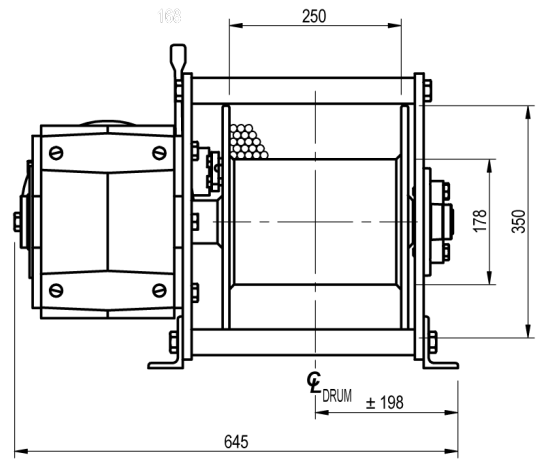
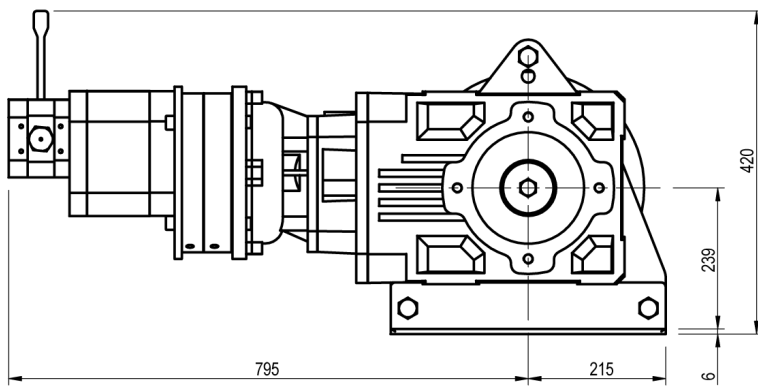
## Winch type A 55 LV

### Products

A range of standard pneumatic winches with high efficiency gearbox, developed for heavy duty pulling and lifting duties up to 2,700 kg. This broad range comprises a variation of very compact winches with vane or gear motors. Drum lengths can easily be adapted to the customers request.

Manufacturer code	A 55 LV
Medium	Pneumatic
Environment	Oil and Gas
Application	Traversing
Series	A
Working Load Limit (WLL) [kg]	2200 kg
Number of layers	5
Lifting WLL first layer	2200 kg
Lifting WLL top layer	1460 kg
Speed at first layer	11 m/min
Speed top layer	15 m/min
Drum capacity first layer	9 m
Drum capacity top layer	72 m
Rope diameter	12 mm
Mass	220 kg
Flow	90 L/sec
Pressure drop	65 bar





FOOTPRINT TOP VIEW