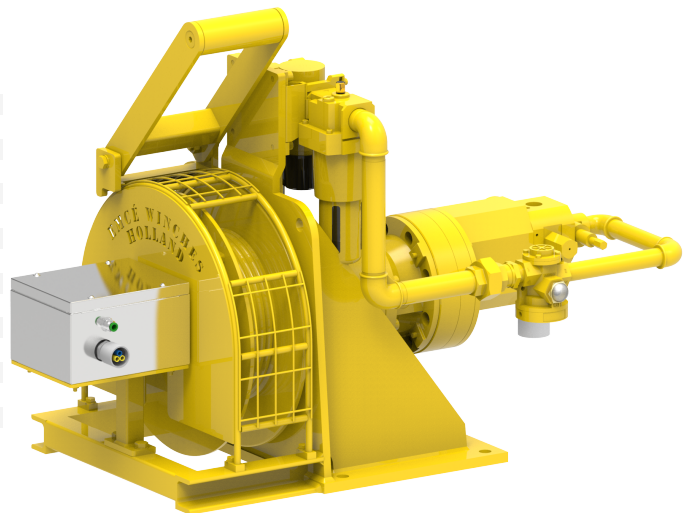


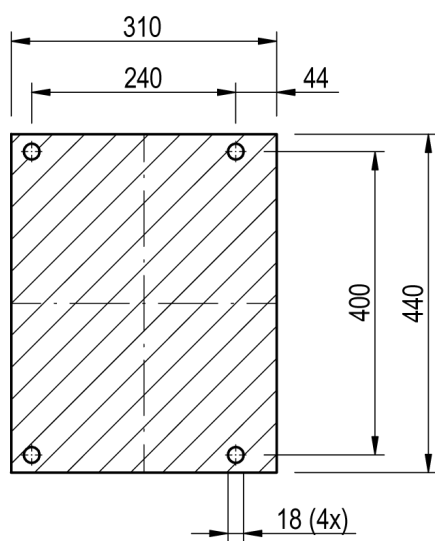
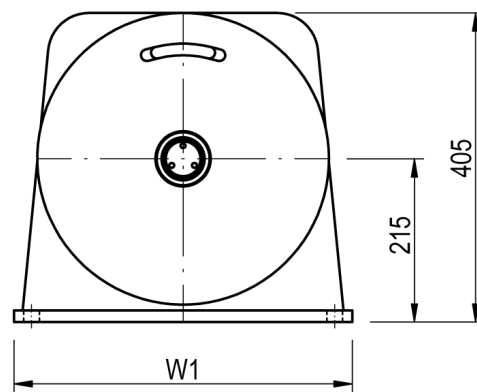
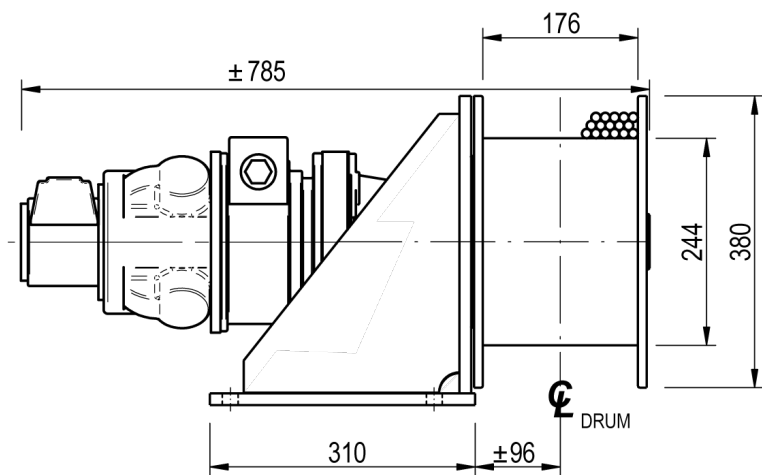
Winch type FD 301 LV

Products

Specially designed for applications where space is at a premium, these compact and lightweight lifting winches are ideally suited for installation on cranes, davits and derricks. The single drum support enables the rope to leave the drum at any angle. The heavy duty planetary drive is partly located within and protected by the drum core. The large drum diameters ensure a healthy drum to cable diameter ratio and a sufficient working length despite the short drums.

Manufacturer code	FD 301 LV
Medium	Pneumatic
Environment	Oil and Gas
Application	Pulling
Series	FD
Working Load Limit (WLL) [kg]	1850 kg
Number of layers	4
Lifting WLL first layer	1850 kg
Lifting WLL top layer	1470 kg
Speed at first layer	10 m/min
Speed top layer	13 m/min
Drum capacity first layer	10 m
Drum capacity top layer	53 m
Rope diameter	11 mm
Mass	140 kg
Flow	90 L/sec
Pressure drop	65 bar





FOOTPRINT TOPVIEW