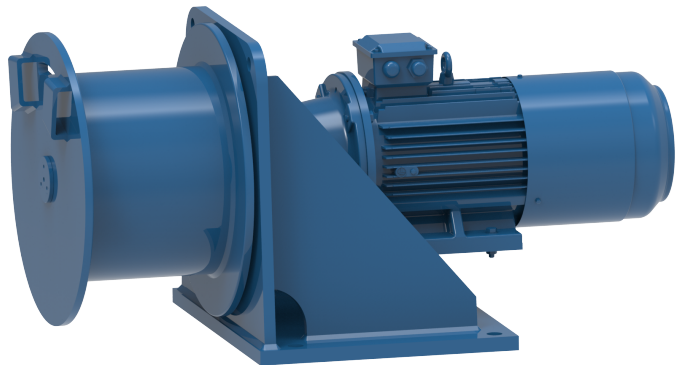


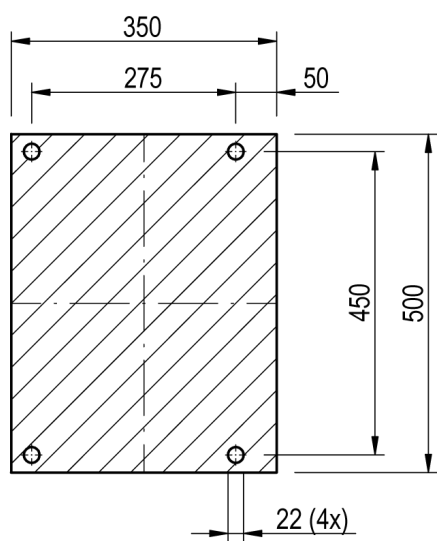
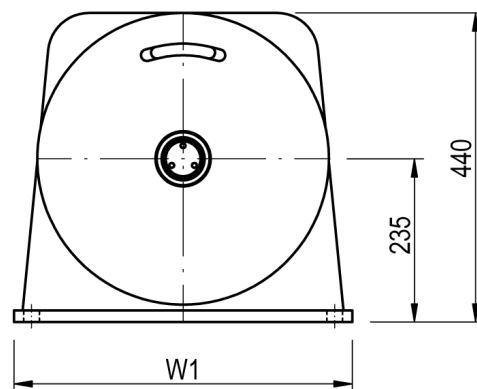
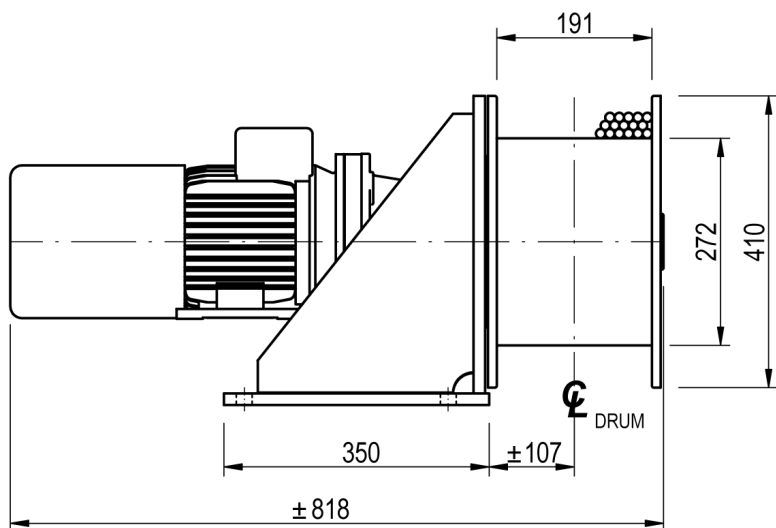
Winch type FD 303 E

Products

Specially designed for applications where space is at a premium, these compact and lightweight lifting winches are ideally suited for installation on cranes, davits and derricks. The single drum support enables the rope to leave the drum at any angle. The heavy duty planetary drive is partly located within and protected by the drum core. The large drum diameters ensure a healthy drum to cable diameter ratio and a sufficient working length despite the short drums.

Manufacturer code	FD 303 E
Medium	Electric
Environment	Renewables
Application	Pulling
Series	FD
Working Load Limit (WLL) [kg]	2300 kg
Number of layers	3
Lifting WLL first layer	2300 kg
Lifting WLL top layer	1970 kg
Speed at first layer	7 m/min
Speed top layer	8.5 m/min
Drum capacity first layer	11 m
Drum capacity top layer	41 m
Rope diameter	12 mm
Motor power S2 duty	3 kW
Motor voltage	400V-AC-3-phase
Mass	180 kg





FOOTPRINT TOPVIEW