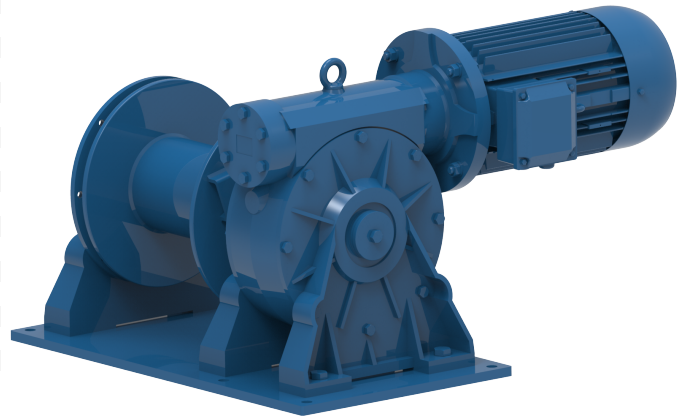


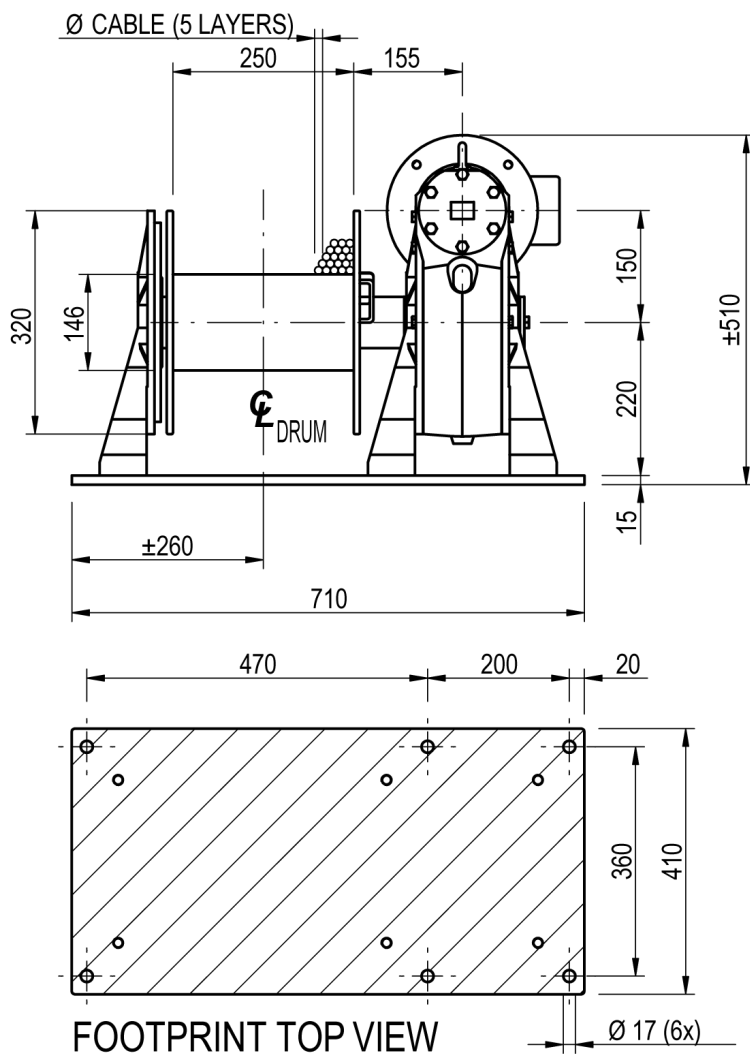
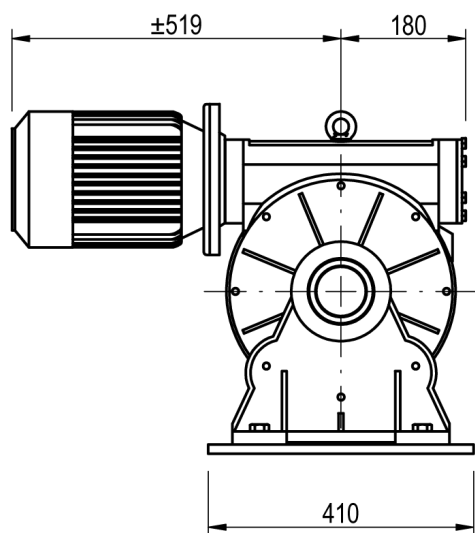
Winch type MCW 2200

Products

The MCW series covers the electric self-braking worm gear winches. Developed for heavy duty pulling and traversing work up to 2000 kg , the MCW series has been a longstanding part of the Emcé winch programme. The MCW series is also available as a lifting winch with capacities up to 1700 kg. For more accurate positioning during pulling, or repetitive lifting jobs, an optional motor brake is available.

Manufacturer code	MCW 2200
Medium	Electric
Environment	Industrial
Application	Traversing
Series	MCW
Working Load Limit (WLL) [kg]	1700 kg
Number of layers	5
Lifting WLL first layer	1700 kg
Lifting WLL top layer	1055 kg
Pulling WLL first layer	2200 kg
Pulling WLL top layer	1365 kg
Speed at first layer	7 m/min
Drum capacity first layer	9 m
Drum capacity top layer	63 m
Rope diameter	12 mm
Motor power S2 duty	5.5 kW
Motor voltage	400V-AC-3-phase
Mass	190 kg





FOOTPRINT TOP VIEW