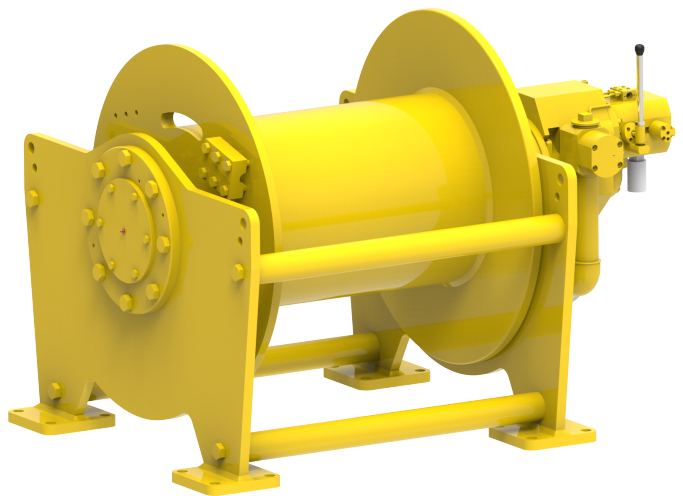


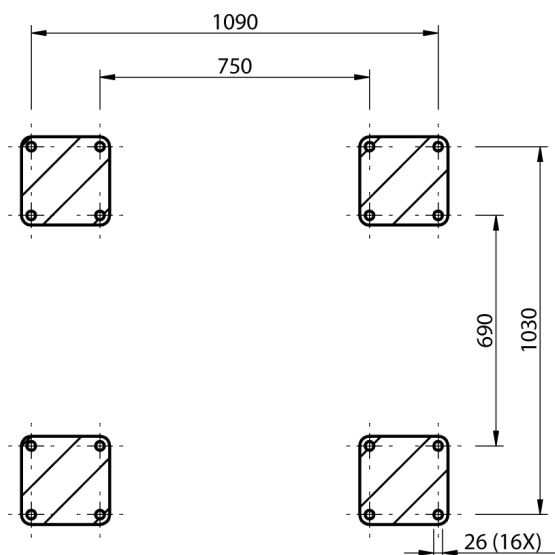
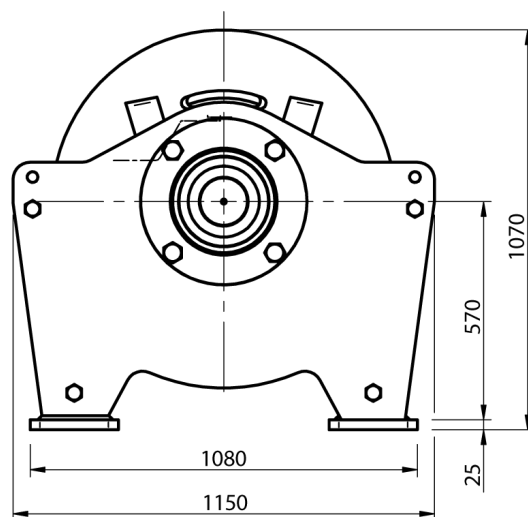
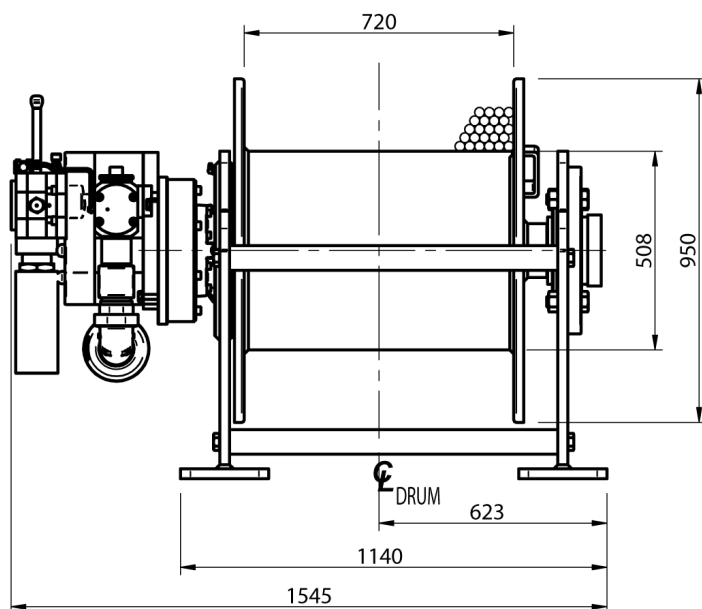
Winch type OAW 10.5 GP16

Products

A range of compact lifting and pulling air winches specially designed for offshore applications or for any other hazardous environment where space is limited. The heavy duty planetary gearbox is mounted within the drum core, which both saves space and protects from any external damage. Winches designed to meet independent third party requirements such as Lloyds, ABS, etc.

Manufacturer code	OAW 10.5 GP16
Medium	Pneumatic
Environment	Oil and Gas
Application	Pulling
Series	OAW
Working Load Limit (WLL) [kg]	14890 kg
Number of layers	5
Lifting WLL first layer	14890 kg
Lifting WLL top layer	10500 kg
Speed at first layer	7 m/min
Speed top layer	16 m/min
Drum capacity top layer	244 m
Rope diameter	28 mm
Mass	1585 kg
Flow	350 L/sec
Pressure drop	7 bar





FOOTPRINT TOP VIEW - A-A