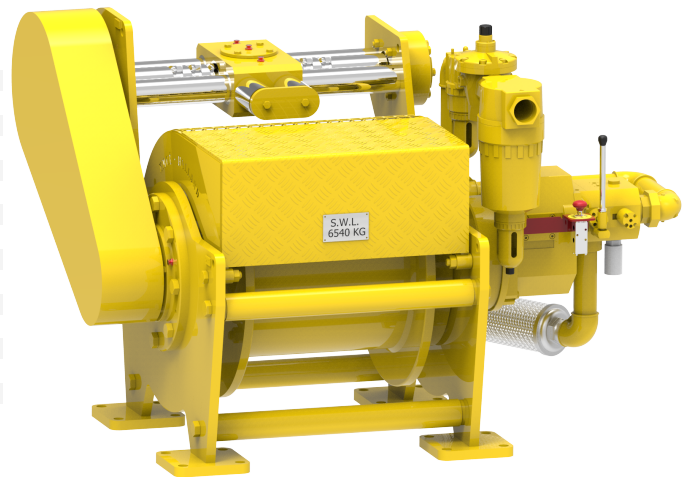


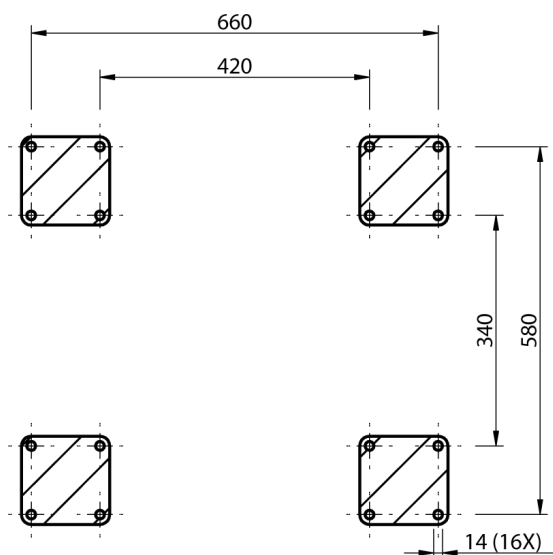
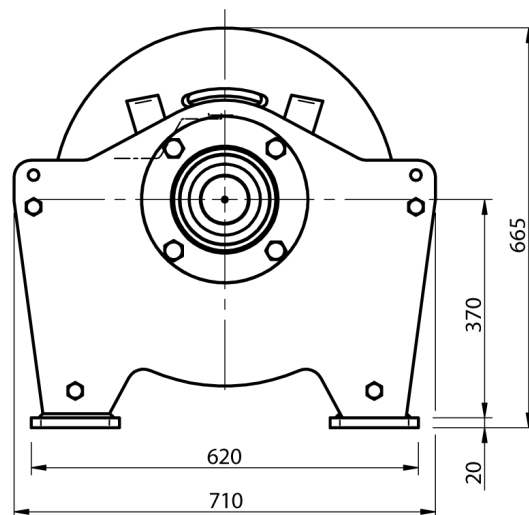
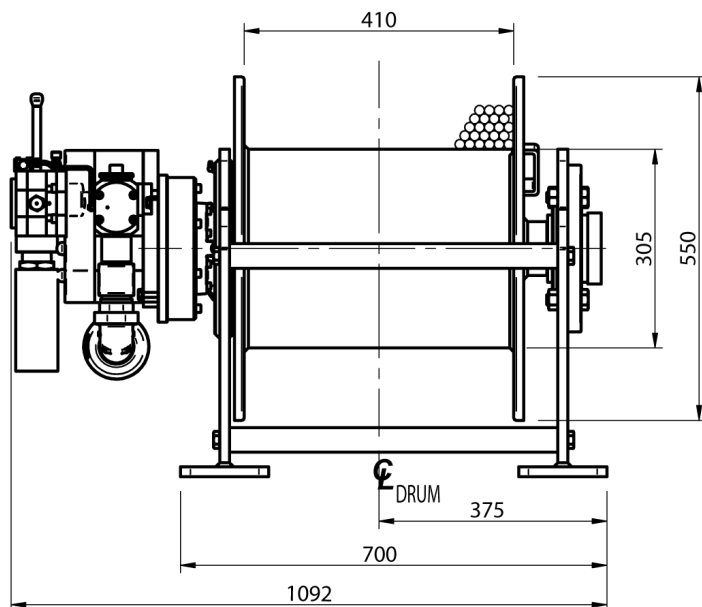
Winch type OAW 2.5 GP10

Products

A range of compact lifting and pulling air winches specially designed for offshore applications or for any other hazardous environment where space is limited. The heavy duty planetary gearbox is mounted within the drum core, which both saves space and protects from any external damage. Winches designed to meet independent third party requirements such as Lloyds, ABS, etc.

Manufacturer code	OAW 2.5 GP10
Medium	Pneumatic
Environment	Oil and Gas
Application	Pulling
Series	OAW
Working Load Limit (WLL) [kg]	3500 kg
Number of layers	5
Lifting WLL first layer	3500 kg
Lifting WLL top layer	2500 kg
Speed at first layer	19 m/min
Speed top layer	36 m/min
Drum capacity top layer	144 m
Rope diameter	16 mm
Mass	665 kg
Flow	300 L/sec
Pressure drop	7 bar





FOOTPRINT TOP VIEW - A-A