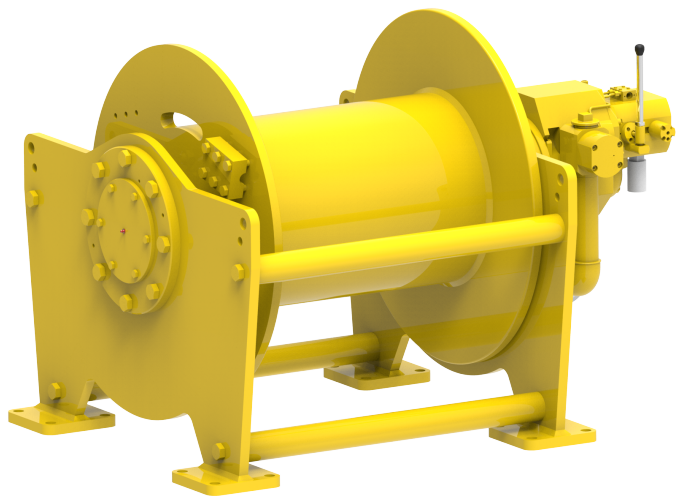


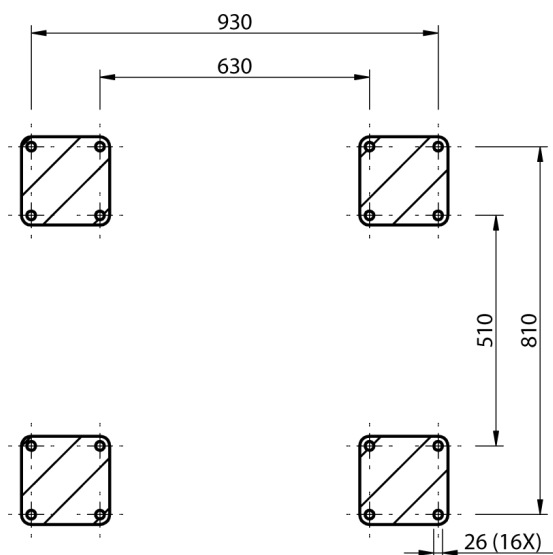
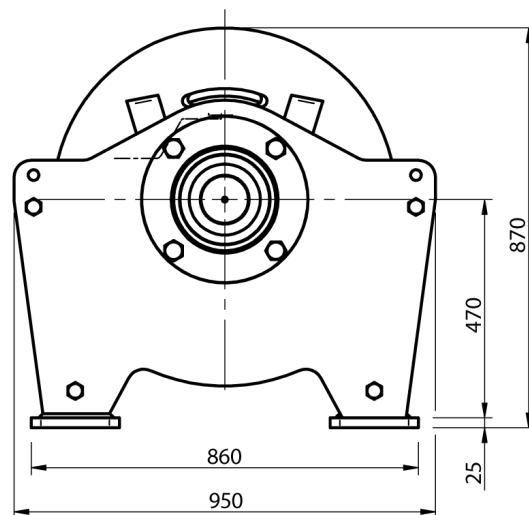
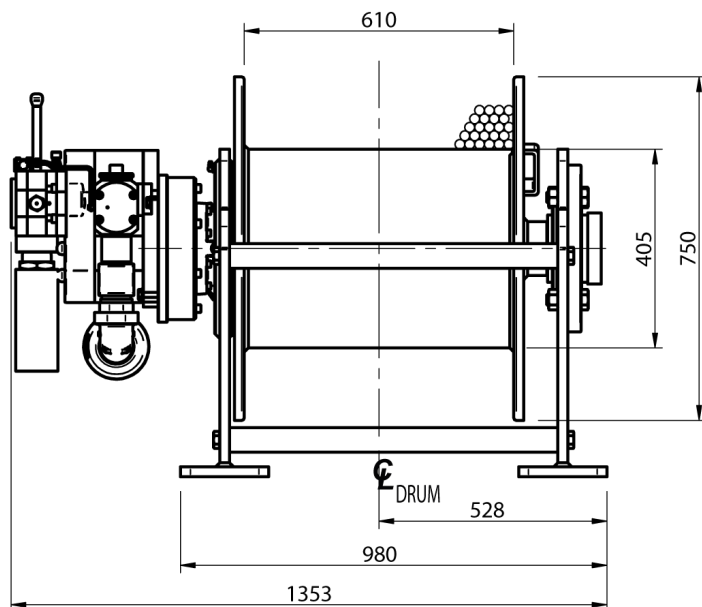
Winch type OAW 7.0 GP16

Products

A range of compact lifting and pulling air winches specially designed for offshore applications or for any other hazardous environment where space is limited. The heavy duty planetary gearbox is mounted within the drum core, which both saves space and protects from any external damage. Winches designed to meet independent third party requirements such as Lloyds, ABS, etc.

Manufacturer code	OAW 7.0 GP16
Medium	Pneumatic
Environment	Oil and Gas
Application	Pulling
Series	OAW
Working Load Limit (WLL) [kg]	9885 kg
Number of layers	5
Lifting WLL first layer	9885 kg
Lifting WLL top layer	7000 kg
Speed at first layer	10 m/min
Speed top layer	22 m/min
Drum capacity top layer	209 m
Rope diameter	22 mm
Mass	1185 kg
Flow	350 L/sec
Pressure drop	7 bar





FOOTPRINT TOP VIEW - A-A