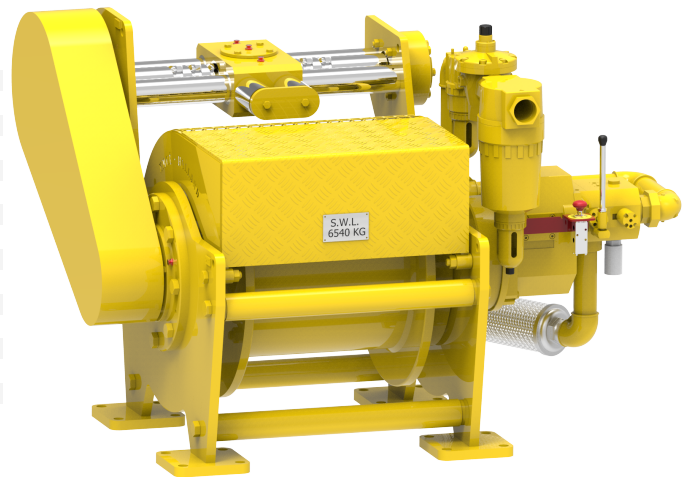


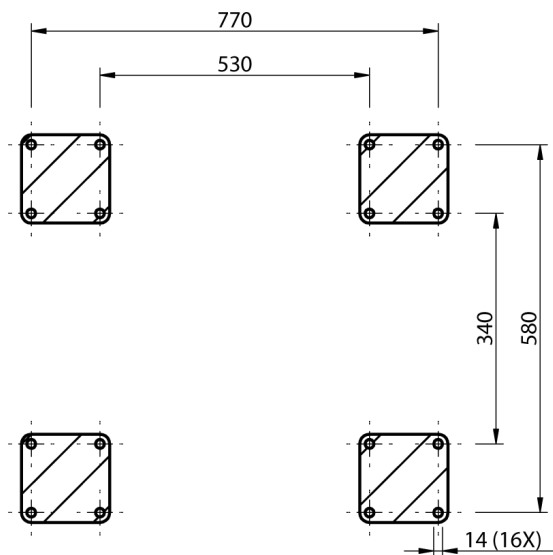
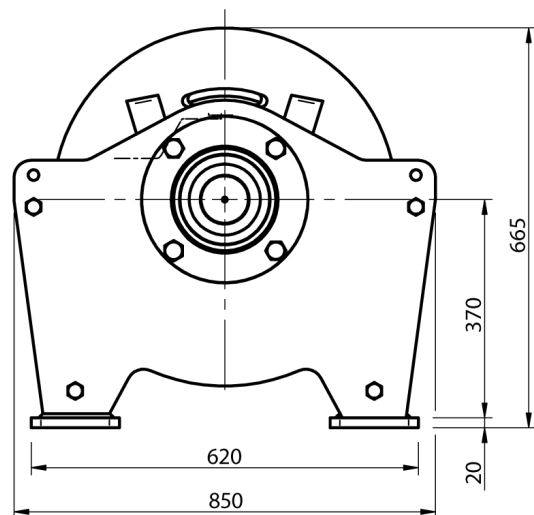
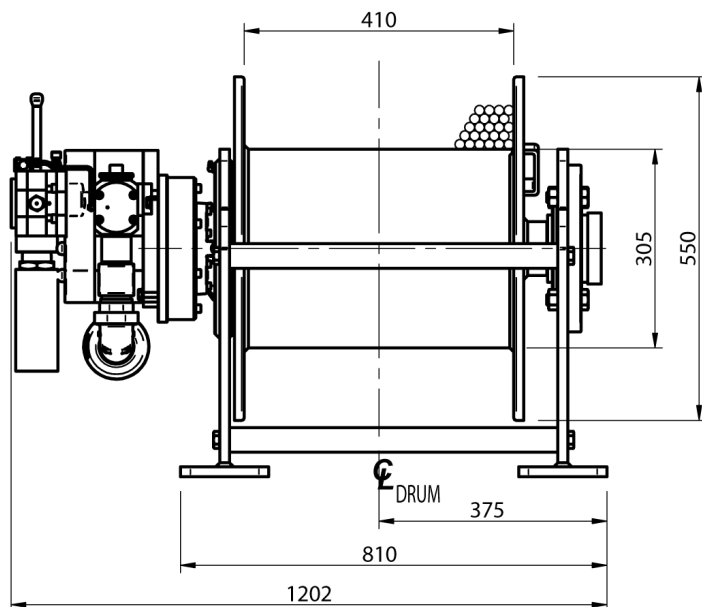
Winch type OMR 1.5 GP10

Products

A range of compact lifting and pulling air winches specially designed for offshore applications or for any other hazardous environment where space is limited. The heavy duty planetary gearbox is mounted within the drum core, which both saves space and protects from any external damage. Winches designed to meet independent third party requirements such as Lloyds, ABS, etc.

Manufacturer code	OMR 1.5 GP10
Medium	Pneumatic
Environment	Oil and Gas
Application	Pulling
Series	OMR
Working Load Limit (WLL) [kg]	2000 kg
Number of layers	5
Lifting WLL first layer	2000 kg
Lifting WLL top layer	1500 kg
Speed at first layer	30 m/min
Speed top layer	54 m/min
Drum capacity top layer	171 m
Rope diameter	13 mm
Mass	705 kg
Flow	300 L/sec
Pressure drop	6 bar





FOOTPRINT TOP VIEW - A-A