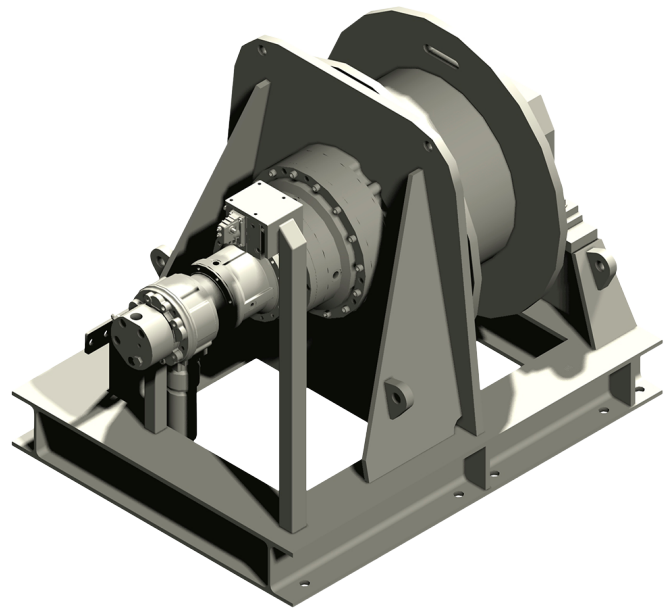


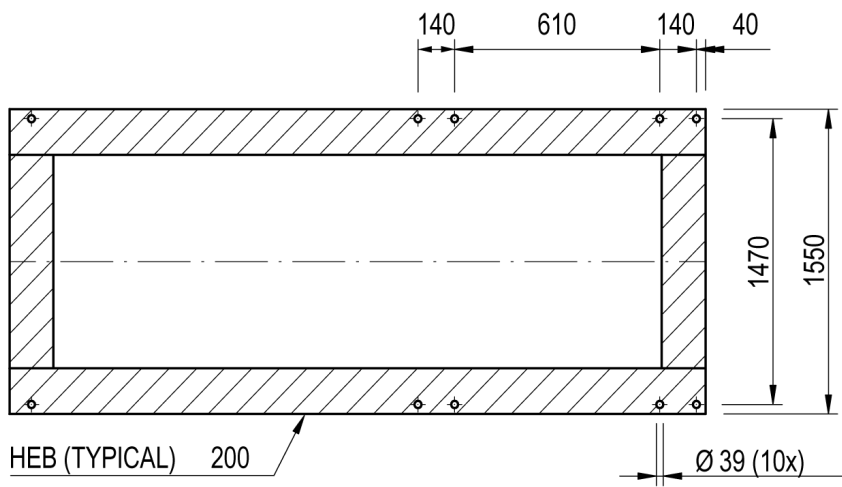
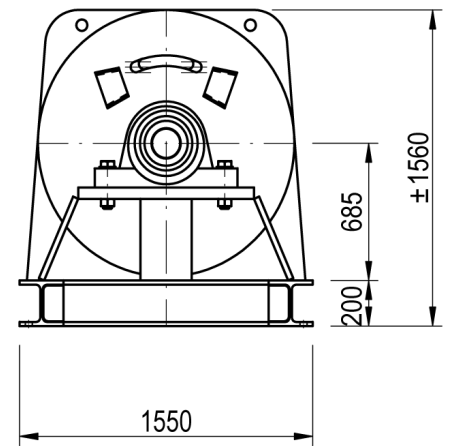
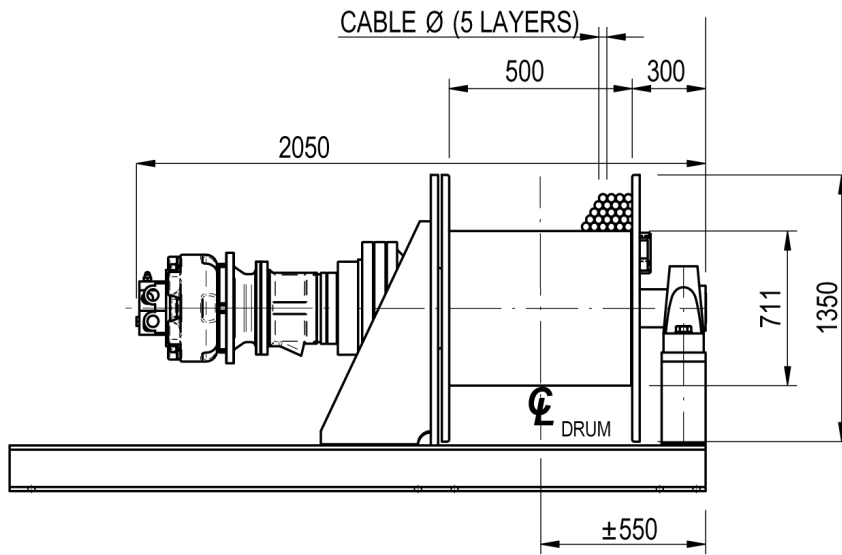
## Winch type SB 315 H

### Products

The standard build SB type winch provides the basis of the solution to many pulling and lifting winch applications. The winch is constructed in the conventional manner with motor, gearbox and drum in line. Capacities can go up to 70 tons of lifting capacity with this range. Although the name of this winch indicates differently, these winches are very suitable to suit your specific winch application. Many options can be offered on these highly versatile winches.

Manufacturer code	SB 315 H
Medium	Hydraulic
Environment	Oil and Gas
Application	Traversing
Series	SB
Working Load Limit (WLL) [kg]	30500 kg
Number of layers	5
Lifting WLL first layer	30500 kg
Lifting WLL top layer	20800 kg
Speed at first layer	8 m/min
Speed top layer	12 m/min
Drum capacity first layer	19 m
Drum capacity top layer	151 m
Rope diameter	44 mm
Mass	3550 kg
Flow	165 L/min
Pressure drop	235 bar





FOOTPRINT TOPVIEW