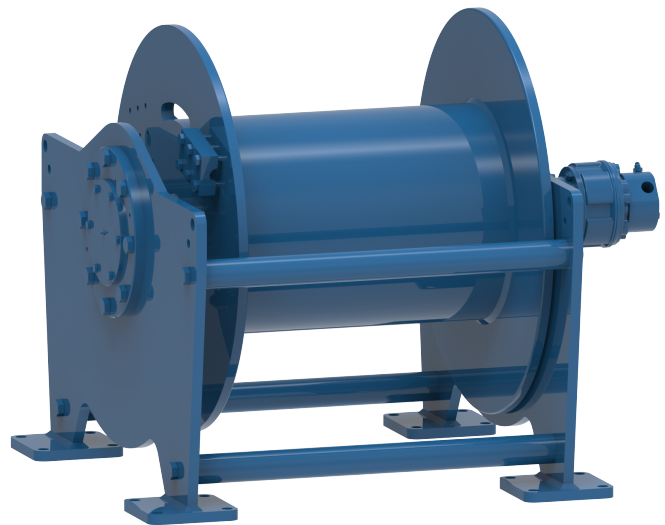


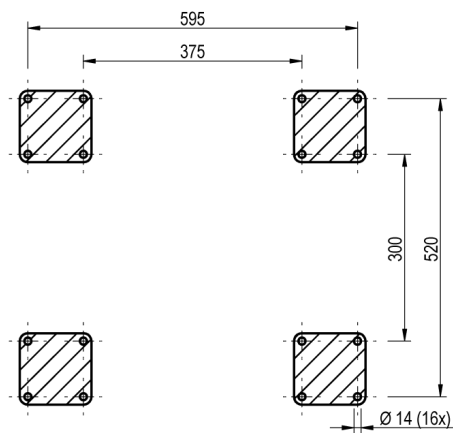
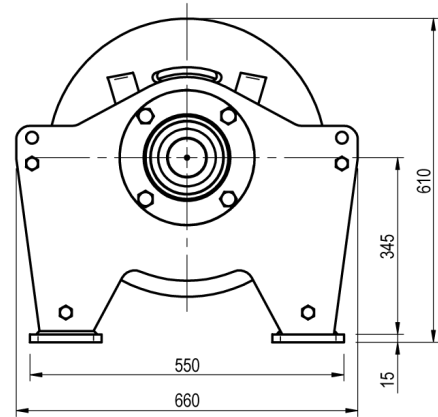
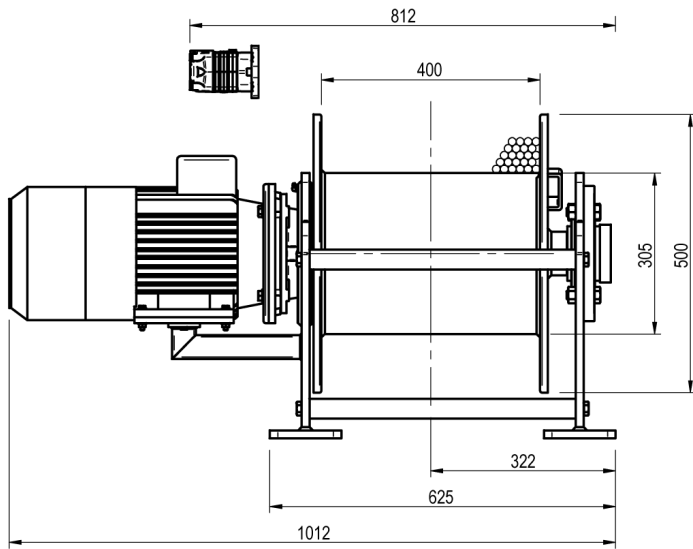
Winch type SC 15 H

Products

A range of compact lifting and pulling winches utilising electric or hydraulic motors. The heavy duty planetary gearbox is located within the drum core, which both saves space and protects the gearbox from any external mechanical threats. Capacities can go up to 30 tons of lifting capacity with this range. Depending on your power source and application, we can select and offer the correct model for you.

Manufacturer code	SC 15 H
Medium	Hydraulic
Environment	Oil and Gas
Application	Pulling
Series	SC
Working Load Limit (WLL) [kg]	1955 kg
Number of layers	5
Lifting WLL first layer	1955 kg
Lifting WLL top layer	1500 kg
Speed at first layer	19 m/min
Speed top layer	25 m/min
Drum capacity top layer	178 m
Rope diameter	12 mm
Mass	315 kg
Flow	60 L/min
Pressure drop	125 bar





FOOTPRINT TOPVIEW A - A

