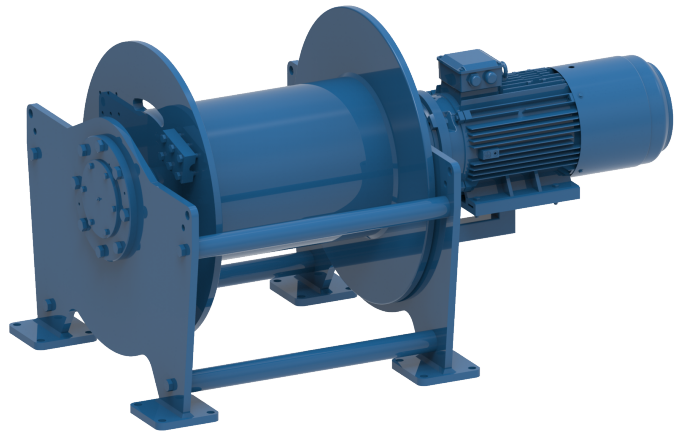


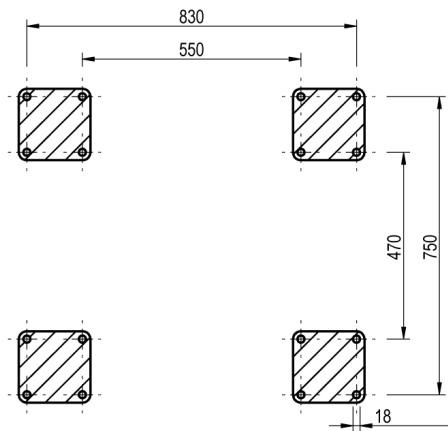
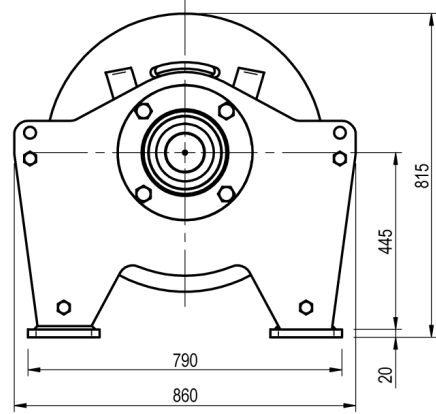
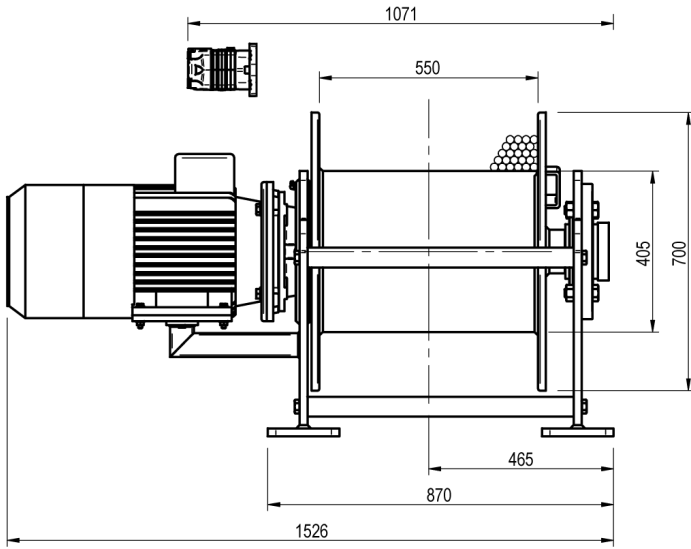
Winch type SC 50 E

Products

A range of compact lifting and pulling winches utilising electric or hydraulic motors. The heavy duty planetary gearbox is located within the drum core, which both saves space and protects the gearbox from any external mechanical threats. Capacities can go up to 30 tons of lifting capacity with this range. Depending on your power source and application, we can select and offer the correct model for you.

Manufacturer code	SC 50 E
Medium	Electric
Environment	Renewables
Application	Pulling
Series	SC
Working Load Limit (WLL) [kg]	6880 kg
Number of layers	5
Lifting WLL first layer	6880 kg
Lifting WLL top layer	5000 kg
Speed at first layer	8 m/min
Speed top layer	11 m/min
Drum capacity top layer	203 m
Rope diameter	20 mm
Motor power S2 duty	11 kW
Motor voltage	400V-AC-3-phase
Mass	810 kg





FOOTPRINT TOPVIEW A - A

