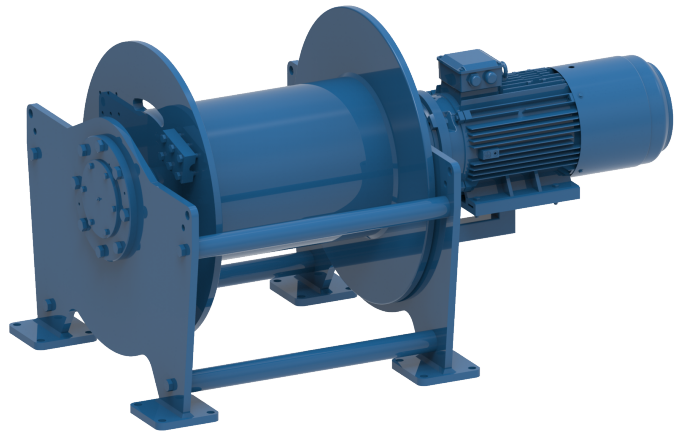


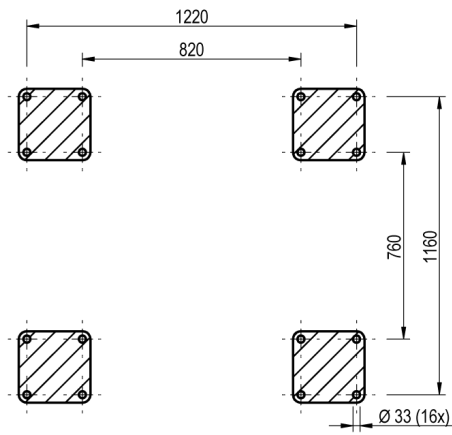
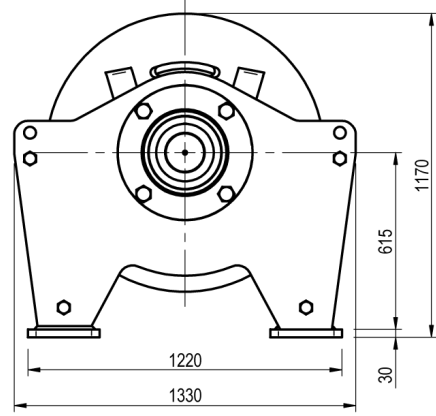
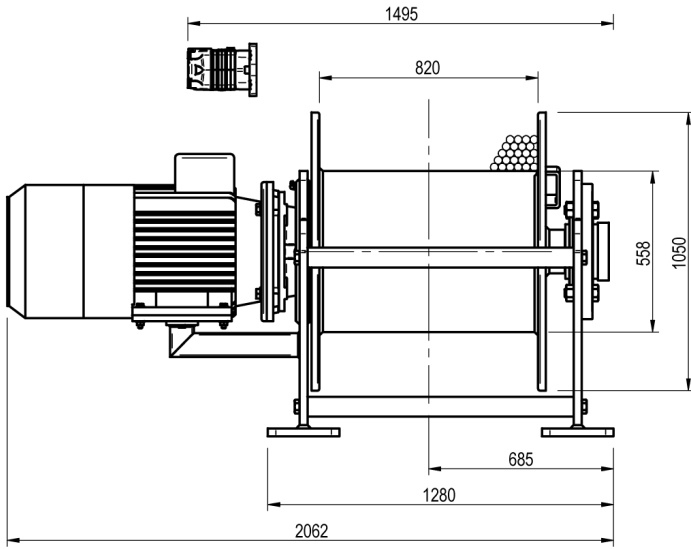
Winch type SC 140 E

Products

A range of compact lifting and pulling winches utilising electric or hydraulic motors. The heavy duty planetary gearbox is located within the drum core, which both saves space and protects the gearbox from any external mechanical threats. Capacities can go up to 30 tons of lifting capacity with this range. Depending on your power source and application, we can select and offer the correct model for you.

Manufacturer code	SC 140 E
Medium	Electric
Environment	Renewables
Application	Pulling
Series	SC
Working Load Limit (WLL) [kg]	18555 kg
Number of layers	4
Lifting WLL first layer	18555 kg
Lifting WLL top layer	14000 kg
Speed at first layer	6 m/min
Speed top layer	8 m/min
Drum capacity top layer	204 m
Rope diameter	32 mm
Motor power S2 duty	22 kW
Motor voltage	400V-AC-3-phase
Mass	2245 kg





FOOTPRINT TOPVIEW A - A

